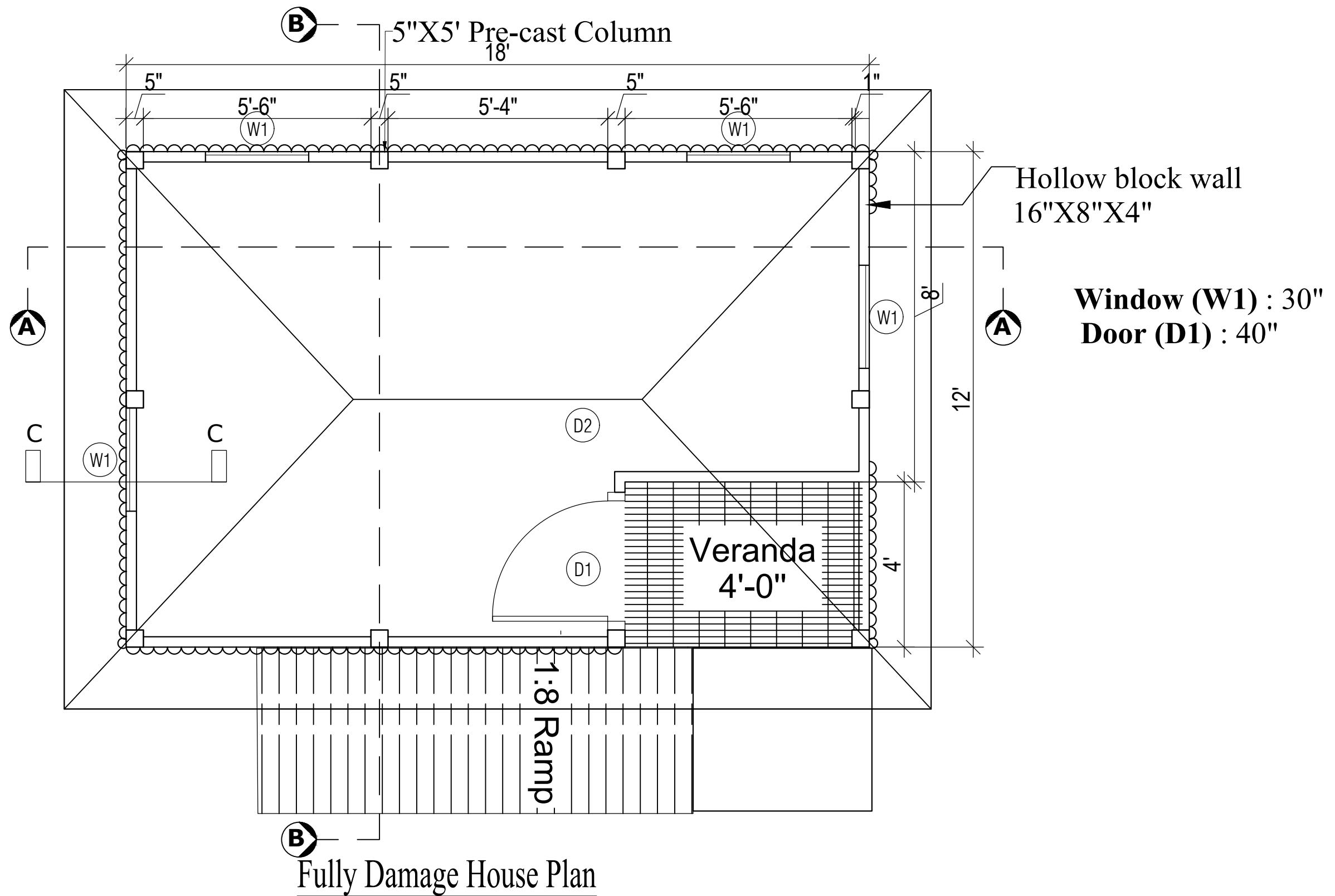
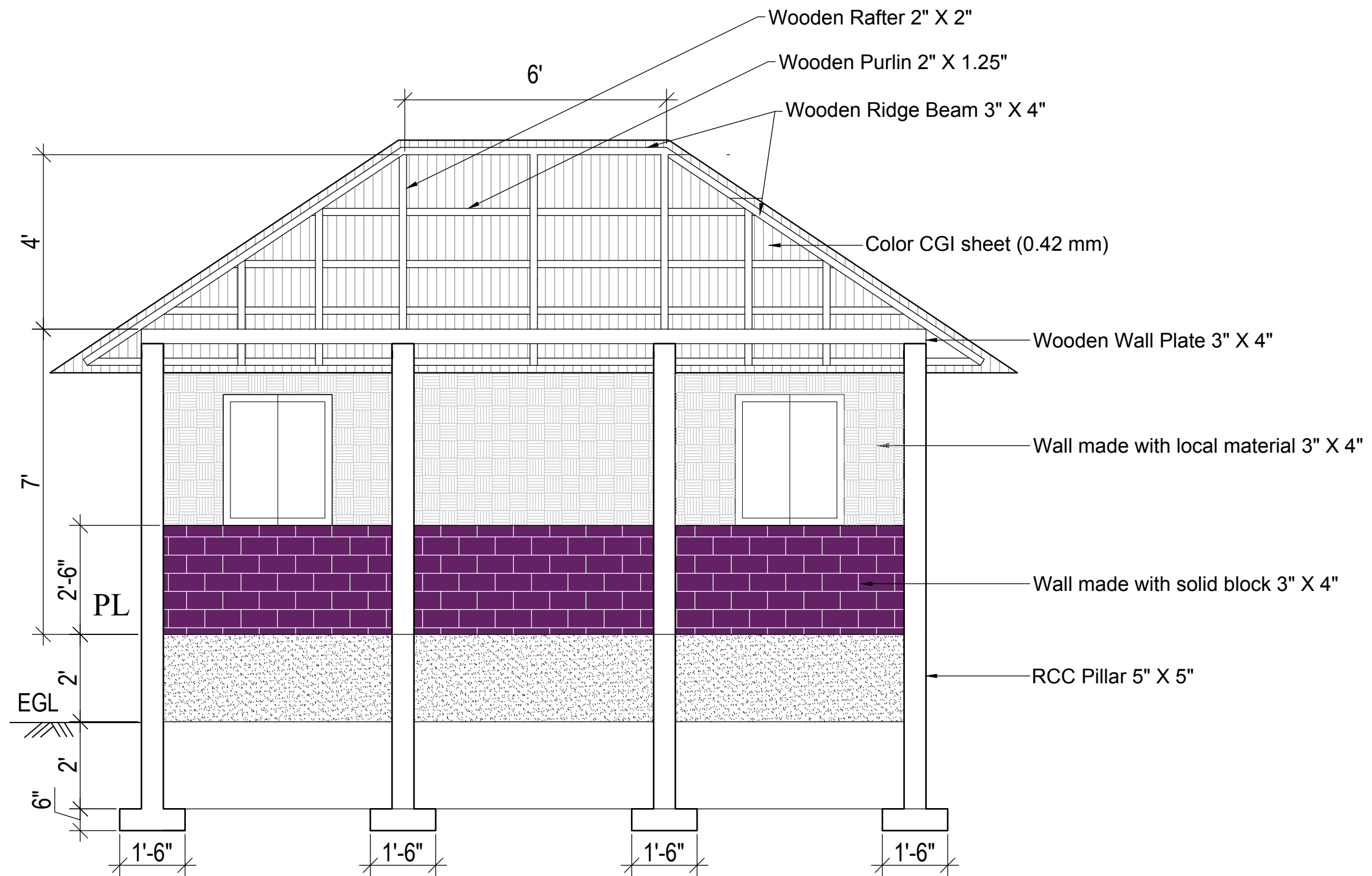


Fully Damaged House Layout Plan

PROJECT : Nature Based Adaptation towards Prosperous and Adept Lives & Livelihoods in Bangladesh (NABAPALLAB)	FUNDED BY	TECHNICAL SUPPORTED BY	DRAWING TITLE:	DRAWN BY: <b>Sayeduz Zaman</b> Senior Officer– CI & RES CARE-Bangladesh, Khulna	REVIEW BY: <b>MD. ZAHIRUL ISLAM</b> Regional Manager – CI & RES CARE-Bangladesh, Khulna	APPROVED BY:	SHEET NO :
			<b>Fully Damage House Layout Plan</b>	SIGNATURE :	SIGNATURE :	SIGNATURE :	REVISION :
							SCALE = NTS
							DATE :

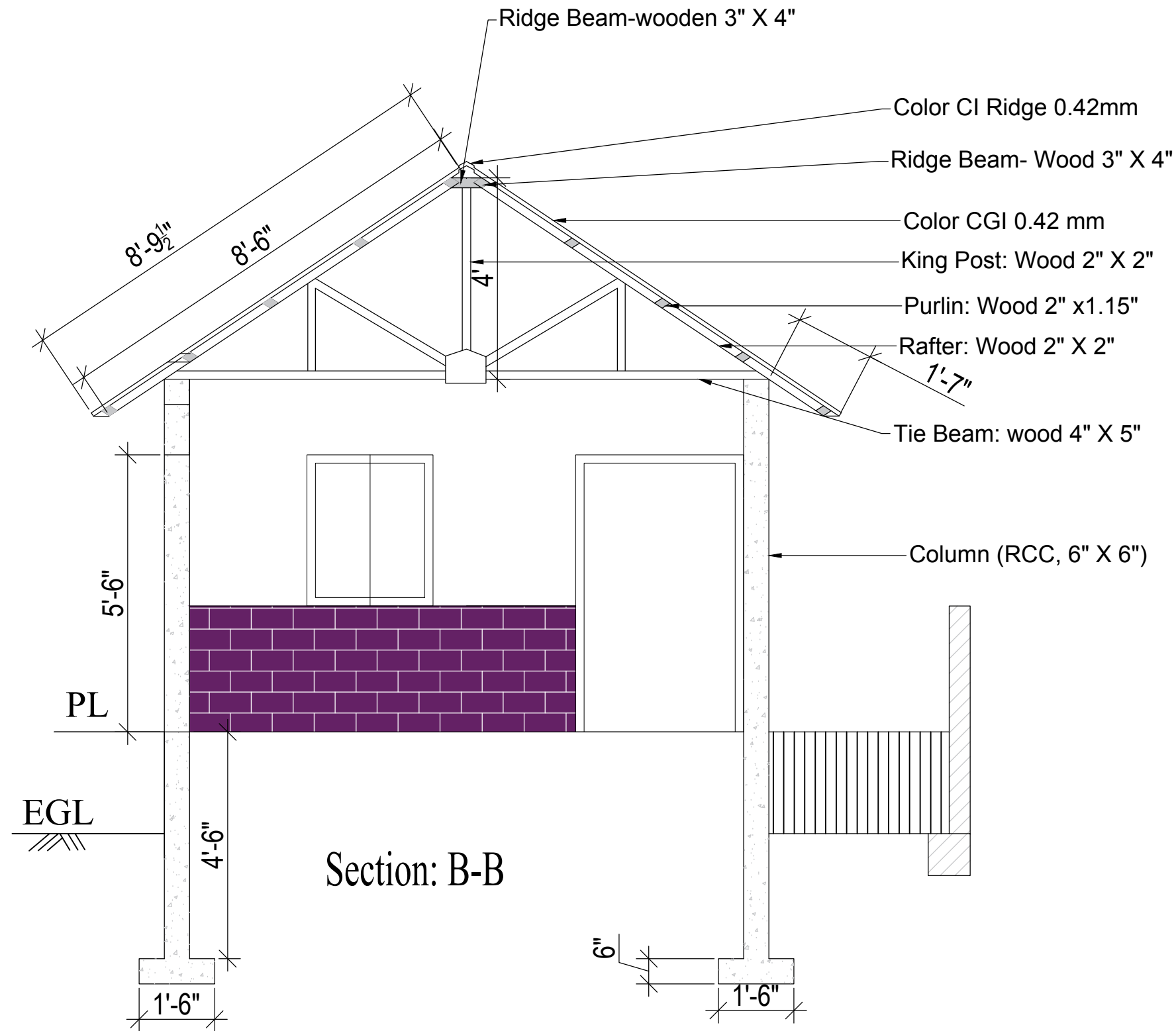


PROJECT : Nature Based Adaptation towards Prosperous and Adept Lives & Livelihoods in Bangladesh (NABAPALLAB)	FUNDED BY	TECHNICAL SUPPORTED BY	DRAWING TITLE:	DRAWN BY: <b>Sayeduz Zaman</b> Senior Officer- CI & RES CARE-Bangladesh, Khulna	REVIEW BY: <b>MD. ZAHIRUL ISLAM</b> Regional Manager - CI & RES CARE-Bangladesh, Khulna	APPROVED BY:	SHEET NO :
			<b>Fully Damage House Plan</b>	SIGNATURE :	SIGNATURE :	SIGNATURE :	REVISION :
							SCALE = NTS
							DATE :

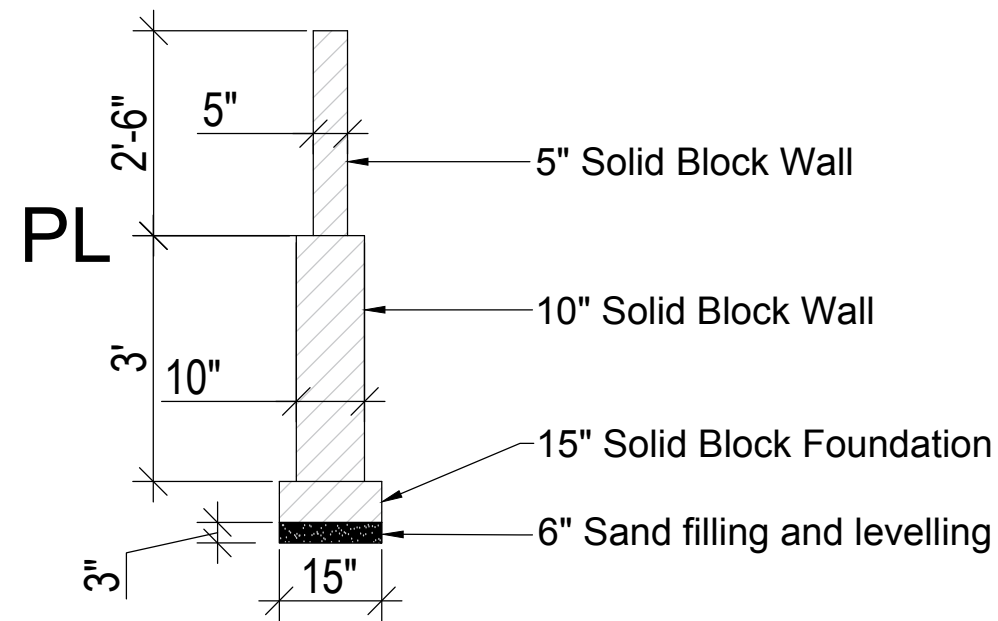


Section: A-A

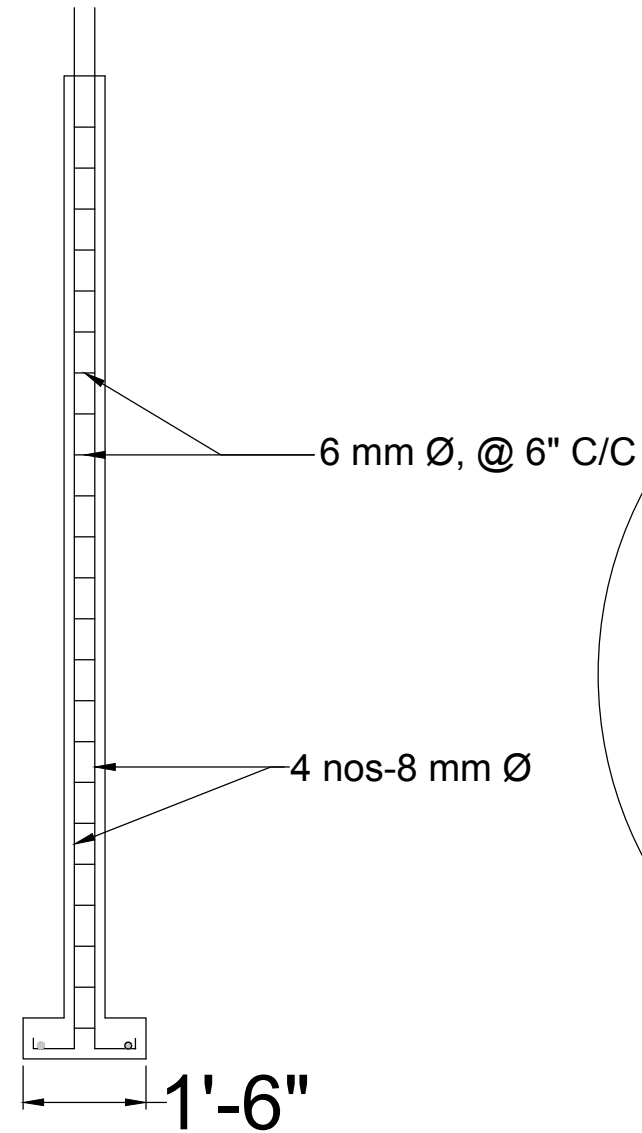
PROJECT : Nature Based Adaptation towards Prosperous and Adept Lives & Livelihoods in Bangladesh (NABAPALLAB)	FUNDED BY	TECHNICAL SUPPORTED BY	DRAWING TITLE:	DRAWN BY: <b>Sayeduz Zaman</b> Senior Officer- CI & RES CARE-Bangladesh, Khulna	REVIEW BY: <b>MD. ZAHIRUL ISLAM</b> Regional Manager - CI & RES CARE-Bangladesh, Khulna	APPROVED BY:	SHEET NO :
			<b>Fully Damage House Section A-A</b>	SIGNATURE :	SIGNATURE :	SIGNATURE :	REVISION :
							SCALE = NTS
							DATE :



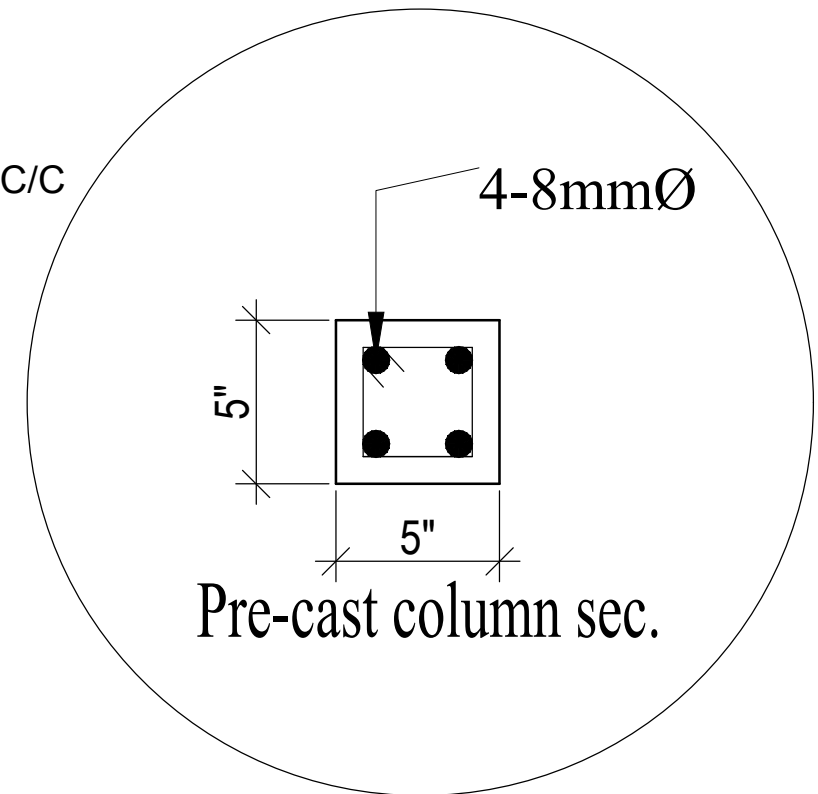
PROJECT : Nature Based Adaptation towards Prosperous and Adept Lives & Livelihoods in Bangladesh (NABAPALLAB)	FUNDED BY	TECHNICAL SUPPORTED BY	DRAWING TITLE:	DRAWN BY: <b>Sayeduz Zaman</b> Senior Officer- CI & RES CARE-Bangladesh, Khulna	REVIEW BY: <b>MD. ZAHIRUL ISLAM</b> Regional Manager – CI & RES CARE-Bangladesh, Khulna	APPROVED BY:	SHEET NO :
			<b>Fully Damage House Section B-B</b>	SIGNATURE :	SIGNATURE :	SIGNATURE :	REVISION :
							SCALE = NTS
							DATE :



Section: C-C



RCC Pillar details



Pre-cast column sec.

PROJECT : Nature Based Adaptation towards Prosperous and Adept Lives & Livelihoods in Bangladesh (NABAPALLAB)	FUNDED BY	TECHNICAL SUPPORTED BY	DRAWING TITLE:	DRAWN BY: <b>Sayeduz Zaman</b> Senior Officer- CI & RES CARE-Bangladesh, Khulna	REVIEW BY: <b>MD. ZAHIRUL ISLAM</b> Regional Manager – CI & RES CARE-Bangladesh, Khulna	APPROVED BY:	SHEET NO :
			<b>Fully Damage House Section C-C RCC Pillar details</b>	SIGNATURE :	SIGNATURE :	SIGNATURE :	REVISION :
							SCALE = NTS
							DATE :